



Hinged Light System Specifications

1. Base Pole

The base pole is composed of carbon steel and finished with a Black Acrylic Enamel Paint and primer using an electrostatic paint process that will stand up to most weather conditions. Supplied with a pivot anchor base and bolts, this base pole section can be purchased separately to use as net anchor. Each pole has the capability of attaching the fitting for a multi net system for Multi Court use.

2. Top Pole

Also composed of carbon steel and finished with a Black Acrylic Enamel Paint and Primer using an electrostatic paint process, this section can be combined with the bottom pole section to provide a light system that can be adjusted to fit the perfect height for most home or small recreational centers. This sectional pole has an ease of use size and adaptor, making it something anyone can do without having to rent large specialty equipment to install or maintain.

3. Fixture Brackets

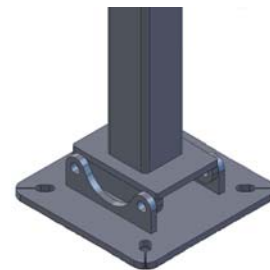
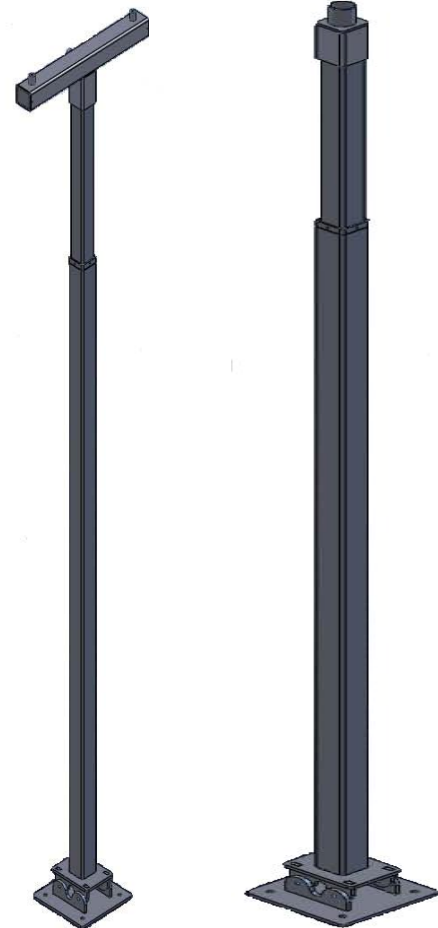
For mounting quartz light fixtures. The T Bar fixture can accommodate up to 3 Quartz 1500W fixtures and fixtures mounted to this bracket can be adjusted vertically. Single Light Collar is a single head bracket for use with the Metal Halide. The Metal Halide Fixture can be mounted to the Single Light collar and use with the adjustable knuckle allows for degree adjustment to optimize lighting.

4. Fixture Options

FLEX COURT is offering a 1500W/500W Quartz flood that can be mounted to specific angle specifications as well as a 1000w Powerflood Shoebox Metal Halide Fixture.

5. Warranty

FLEX COURT offers a standard 5 Year Warranty on the Light System.



1500W Quartz



1000 W Metal Halide
Powerflood Shoebox